

--	--	--	--	--	--	--	--	--	--	--	--	--	--	--	--	--	--	--	--

<b>Question Paper Code : 80191</b>
------------------------------------

B.E./B.Tech. DEGREE EXAMINATIONS, APRIL/MAY 2019.

First Semester

Marine Engineering

HS 8101 — TECHNICAL ENGLISH – I

(Regulation 2017)

Time : Three hours

Maximum : 100 marks

Answer ALL questions.

PART A — (10 × 2 = 20 marks)

1. Fill in the blanks with the suitable tense form of the verb given in brackets:  
(4 ×  $\frac{1}{2}$  = 2)
  - (a) Tomorrow, at this time we \_\_\_\_\_ (attend) a workshop.
  - (b) Some microbes were observed while the scientist \_\_\_\_\_ (look) through the microscope.
  - (c) Builders \_\_\_\_\_ (finish) the Millennium Dome by the end of the year 2000.
  - (d) Is this your house? How long \_\_\_\_\_ (you, live) here?
  
2. Fill in the blanks in the following sentences with suitable prepositions :  
(4 ×  $\frac{1}{2}$  = 2)
  - (a) Are you going \_\_\_\_\_ foot?
  - (b) I have not seen him \_\_\_\_\_ years.
  - (c) The matter is \_\_\_\_\_ investigation.
  - (d) He was driving \_\_\_\_\_ 70 kmph.
  
3. Frame Wh-questions to get the underlined the word or words as the answers:  
(4 ×  $\frac{1}{2}$  = 2)
  - (a) Mosquitoes breed in the stagnant water.
  - (b) Trekking is considered the warm-up exercise for mountaineering.
  - (c) The fossil fuels are dangerous because they emit a lot of Poisonous gases.
  - (d) The Norwegians popularized energy generation from wind mills.

4. Fill in the blanks with suitable verbs forms : (4 ×  $\frac{1}{2}$  = 2)
- (a) Some of the people waiting in the line \_\_\_\_\_ (is / are) getting impatient.
- (b) Hurry up! Everyone \_\_\_\_\_ (is / are) waiting for you.
- (c) Comfortable shoes \_\_\_\_\_ (is / are) recommended by the instructor.
- (d) Neither of those hats \_\_\_\_\_ (suit / suits) your face.
5. Expand the following compound nouns : (4 ×  $\frac{1}{2}$  = 2)
- (a) Tax Exemption
- (b) Wave Energy
- (c) Weighing Machine
- (d) Business Outsourcing
6. Define any TWO of the following : (2 × 1 = 2)
- (a) Coolant
- (b) Microscope
- (c) Pen drive
7. Combine the following using causal expressions like consequently, due to, owing to, because of, etc. (4 ×  $\frac{1}{2}$  = 2)
- (a) Her laptop stopped working. Presence of virus.
- (b) Increase of population. Shortage of resources.
- (c) Monsoon rains failed in the state. Agricultural crops cannot be grown.
- (d) Coral reefs are destroyed. The ocean water is getting heated up.
8. Choose the correct meaning of the words from the given options : (4 ×  $\frac{1}{2}$  = 2)
- (a) building for storing historical and cultural things:
- (i) museum (ii) gallery
- (iii) fort
- (b) state in which the few govern the many:
- (i) monarchy (ii) oligarchy
- (iii) plutocracy
- (c) a person who knows many foreign languages:
- (i) linguist (ii) bilingual
- (iii) grammarian
- (d) words inscribed on tomb:
- (i) epitstle (ii) epitome
- (iii) epitaph

9. Expand the following abbreviations/ acronyms:

$(4 \times \frac{1}{2} = 2)$

- (a) BBC
- (b) PSLV
- (c) SONAR
- (d) OPEC.

10. Convert the following into Indirect Speech:

$(2 \times 1 = 2)$

- (a) "Please wait here till I return," she told him.
- (b) Raja asked me, "Did you watch the cricket match on TV the previous night?"

PART B —  $(5 \times 16 = 80 \text{ marks})$

11. Read the following passage and then answer the questions that follow: (16)

Charles A. Lindbergh is remembered as the first person to make a nonstop solo flight across the Atlantic, in 1927. This feat, performed when Lindbergh was only 25 years old, assured him a lifetime of fame and public attention.

Charles Augustus Lindbergh was more interested in flying airplanes than he was in studying. He dropped out of the University of Wisconsin after two years to earn a living performing daredevil airplane stunts at county fairs. Two years later, he joined the United States Army so that he could go to the Army Air Service flight-training school. After completing his training, he was hired to fly mail between St. Louis and Chicago.

Then came the historic flight across the Atlantic. In 1919, a New York City hotel owner offered a prize of \$25,000 for the first pilot to fly nonstop from New York to Paris. Nine St. Louis business leaders helped by paying for the plane Lindbergh designed especially for the flight. Lindbergh tested the plane by flying it from San Diego to New York, with an overnight stop in St. Louis. The flight took only 20 hours and 21 minutes, a transcontinental record.

Eight years later, on May 20, 1927, Lindbergh took off from Long Island, New York, at 7:52 am. He landed in Paris on May 21 at 10:21 p.m. He had flown more than 3,600 miles in less than 34 hours. His flight made news around the world. He was given awards and parades everywhere he went. He was presented with the US Congressional Medal of Honor and the first Distinguished Flying Cross. For a long time, Lindbergh toured the world as a US goodwill ambassador. He met his future wife, Anne Morrow, in Mexico, where her father was the United States ambassador.

During the 1930s, Charles and Anne Lindbergh worked for various airline companies, charting new commercial air routes. In 1931, for a major airline, they charted a new route from the east coast of the United States to the Orient. The shortest, most efficient route was a great curve across Canada, over Alaska, and down to China and Japan. Most pilots familiar with the Arctic did not believe that such a route was possible. The Lindberghs took on the task of proving that it was. They arranged for fuel and supplies to be set out along the route. On July 29, they took off from Long Island in a specially equipped small seaplane. They flew by day and each night landed on a lake or a river and camped. Near Nome, Alaska, they had their first serious emergency. Out of daylight and nearly out of fuel, they were forced down into a small ocean inlet. Next day morning, they discovered they had landed on barely three feet of water. On September 19, after two more emergency landings and numerous close calls, they landed in China with the maps for a safe airline passenger route.

Even while actively engaged as a pioneering flier, Lindbergh was also working as an engineer. In 1935, he and Dr. Alexis Carrel were given a patent for an artificial bean. During World War II in the 1940s, Lindbergh served as a civilian technical advisor in aviation. Although he was a civilian, he flew over 50 combat missions in the Pacific. In the 1950s, Lindbergh helped design the famous 747 jet airliner. In the late 1960s, he spoke widely on conservation issues. He died in August 1974, having lived through aviation history from the time of the first powered flight to the first steps on the moon and having influenced a big part of that history himself.

- (a) Choose the right answer for the following questions: (8 × 1 = 8)
- (i) Lindbergh dropped out of the University of Wisconsin
- (1) as he could not study
  - (2) as he is assured of lifetime fame
  - (3) to perform airplane stunts at county fairs
  - (4) to join the United States Army
- (ii) After his New York – Paris flight, he travelled to various parts of the world
- (1) with the financial assistance of nine St. Louis business leaders
  - (2) as a US goodwill ambassador
  - (3) with a New York City hotel owner
  - (4) to receive awards

- (iii) During World War II, Lindbergh served
- (1) as a pilot
  - (2) as an engineer
  - (3) as a technical assistant
  - (4) as a civilian technical advisor in aviation
- (iv) Lindbergh helped to design the famous 747 jet airliner
- (1) in the 1930s
  - (2) in the 1940s
  - (3) in the 1950s
  - (4) in the 1960s
- (v) What did Lindbergh do before he crossed the Atlantic?
- (1) He charted a route to China.
  - (2) He graduated from flight-training school.
  - (3) He married Anne Morrow.
  - (4) He acted as a technical advisor during World War II.
- (vi) What happened immediately after Lindbergh crossed the Atlantic?
- (1) He flew the mail between St. Louis and Chicago.
  - (2) He left college.
  - (3) He attended the Army flight-training school.
  - (4) He was given the Congressional Medal of Honor.
- (vii) When did Charles meet Anne Morrow?
- (1) Before he took off from Long Island.
  - (2) After he worked for an airline.
  - (3) After he was forced down into an ocean inlet.
  - (4) After he received the first Distinguished Flying Cross.
- (viii) When did the Lindberghs map an air route to China?
- (1) Before they worked for an airline.
  - (2) Before Charles worked with Dr. Carrel.
  - (3) After World War II.
  - (4) While designing the 747.

- (b) Based on the passage, choose the correct meaning for the following words: (4 × 1 = 4)

(i) feat

- (1) ability (2) trick  
(3) accomplishment (4) effort

(ii) daredevil

- (1) devilish (2) audacious  
(3) amusing (4) safe

(iii) inlet

- (1) bay (2) gulf  
(3) isthmus (4) canal

(iv) charting

- (1) tracing (2) drawing  
(3) plotting (4) mapping

- (c) Identify the one word substitute from the given passage for the following explanations: (4 × 1 = 4)

- (i) an official right to be the only person to make, use or sell a product or invention  
(ii) a person who is not a member of the armed forces or the police  
(iii) the state of being known and talked about by many people  
(iv) to have the things that are needed for a particular purpose

12. (a) Write a set of eight instructions to be followed during cyclonic storms and rains. (16)

Or

- (b) Write a set of eight instructions to be followed at an amusement park. (16)

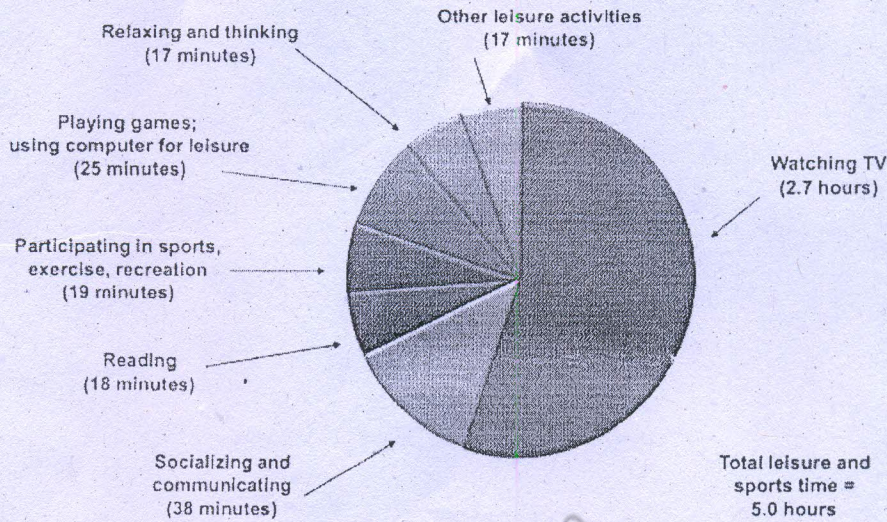
13. (a) Write a set of eight recommendations to maintain your college campus clean and green. (16)

Or

- (b) Write a set of eight recommendations that will help the public follow traffic rules. (16)

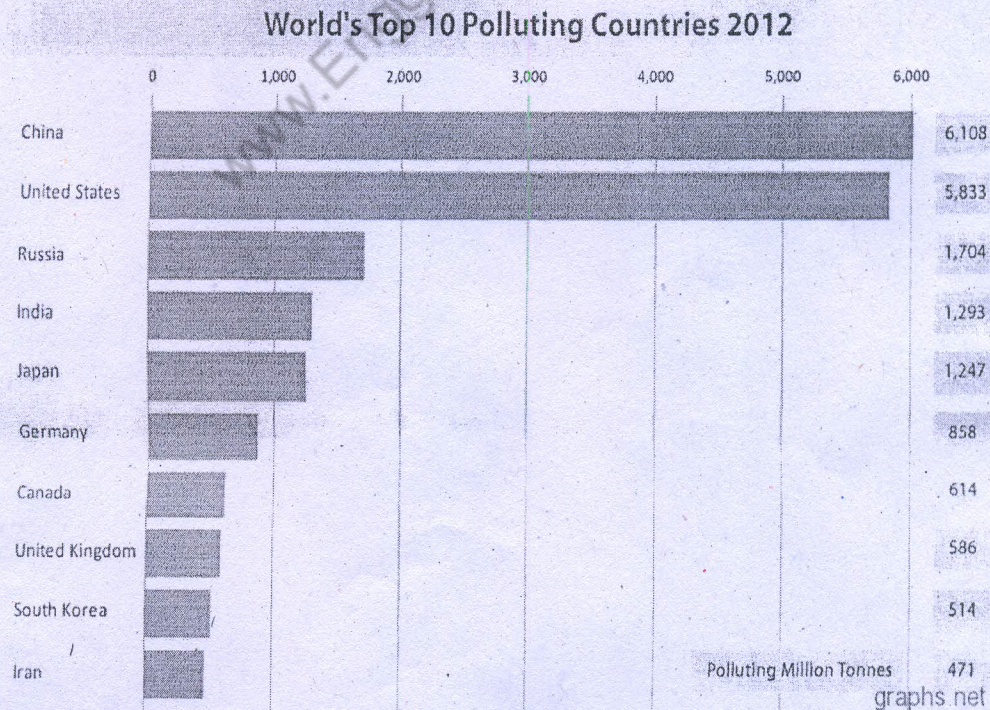
14. Choose any one of the charts and write a detailed description and interpretation in not more than 250 words. (16)

(a) **Leisure time on an average day**



Or

(b)



15. Write an essay of 300 words on any ONE of the following topics : (16)

(a) Compare and contrast urban life to rural life.

Or

(b) Can students be given unrestricted access to the internet?

---

www.EnggTree.com